



Maintenance & Parts list for:



Industrial Mount and Accessories

GB 3
10/2020

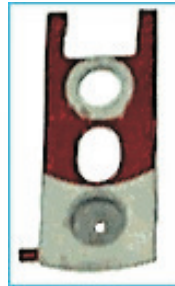
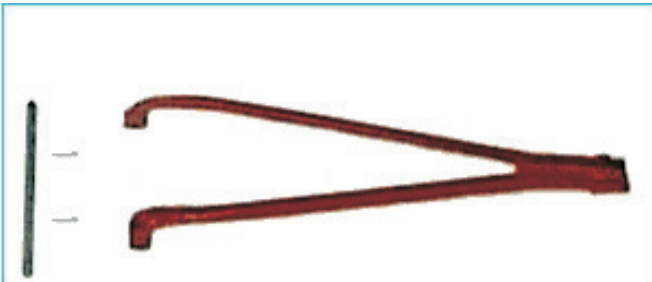


WINCHESTER INDUSTRIAL SERVICE
V. Parbst & Søn
41 Borsholmvej, 3000 Helsingør
Denmark

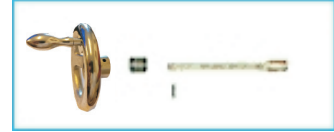
Phone no.: (45) 49 76 54 00
Fax no.: (45) 49 76 54 20
E-mail: winchester@parbst.dk



Page 11



Page 11



Page 8



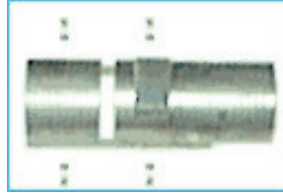
Page 9



Page 4



Page 12



Page 3



Page 7



Page 5



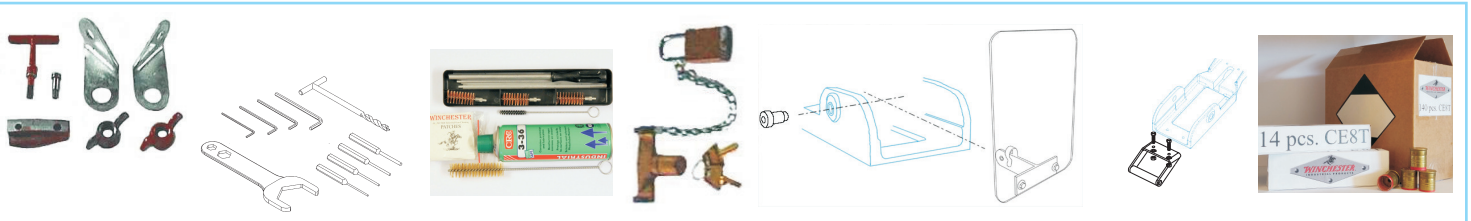
Page 7



Page 10



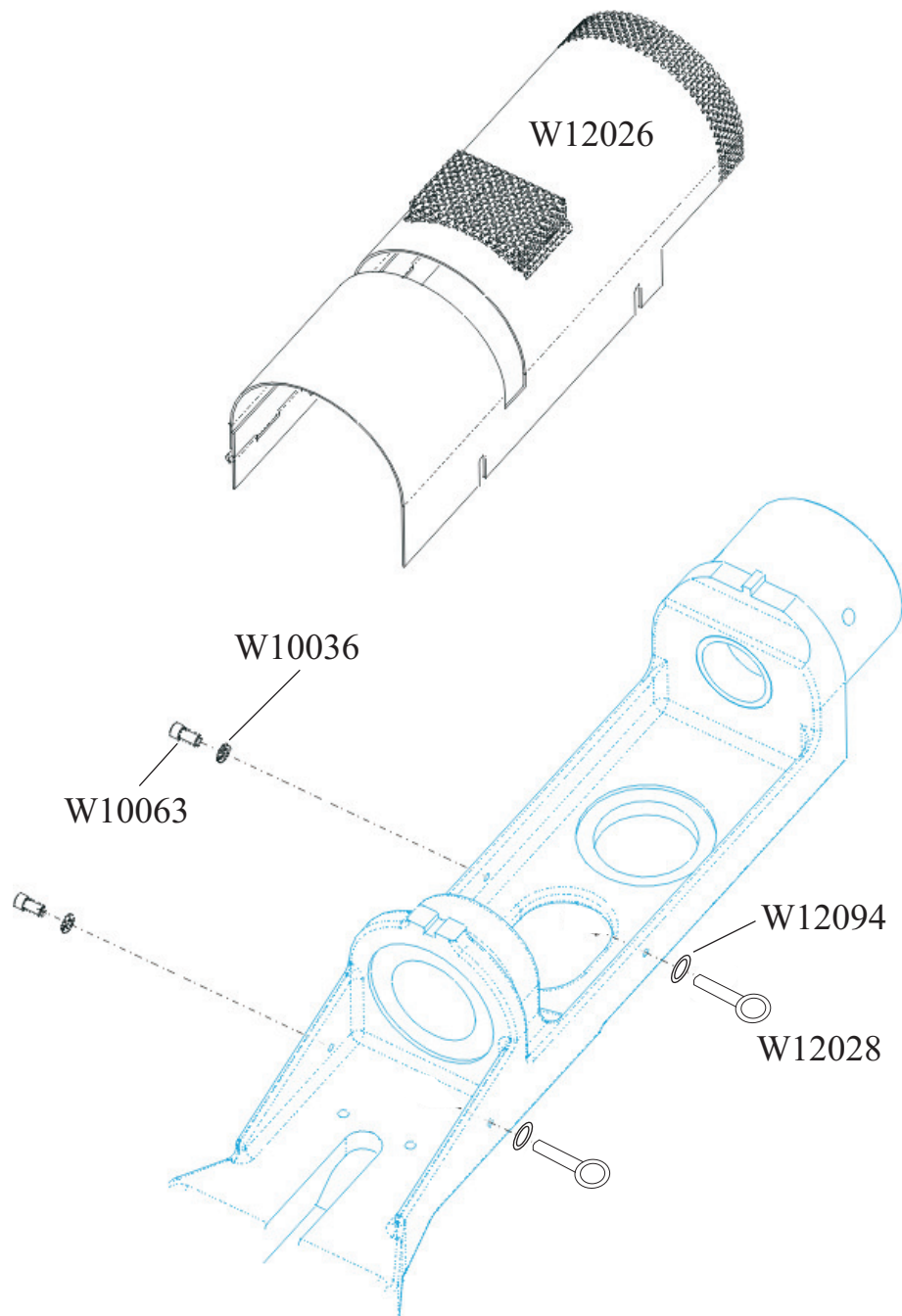
Page 6



Page 13+14

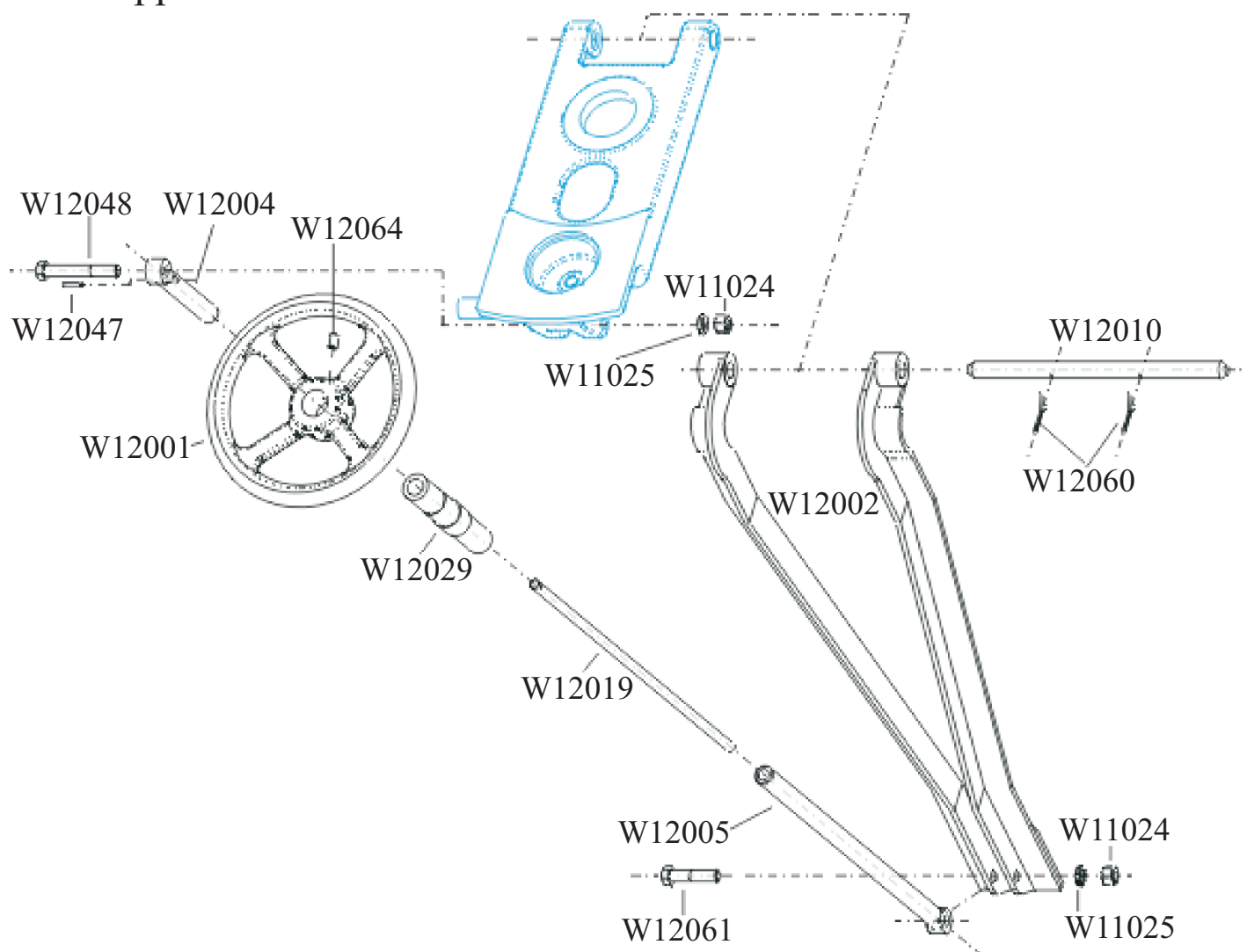
To disassemble Spring Guard:

Loosen W12028 Eye Bolt and swing W12026 Spring Guard away from Mount assembly.



No.	Name of Part	Required
W10036	Lock Washer	2
W10063	Socket Head Cap Screw	2
W12026	Guard Assembly	1
W12028	Eye Bolt	2
W12094	Plain Flat Washer	2

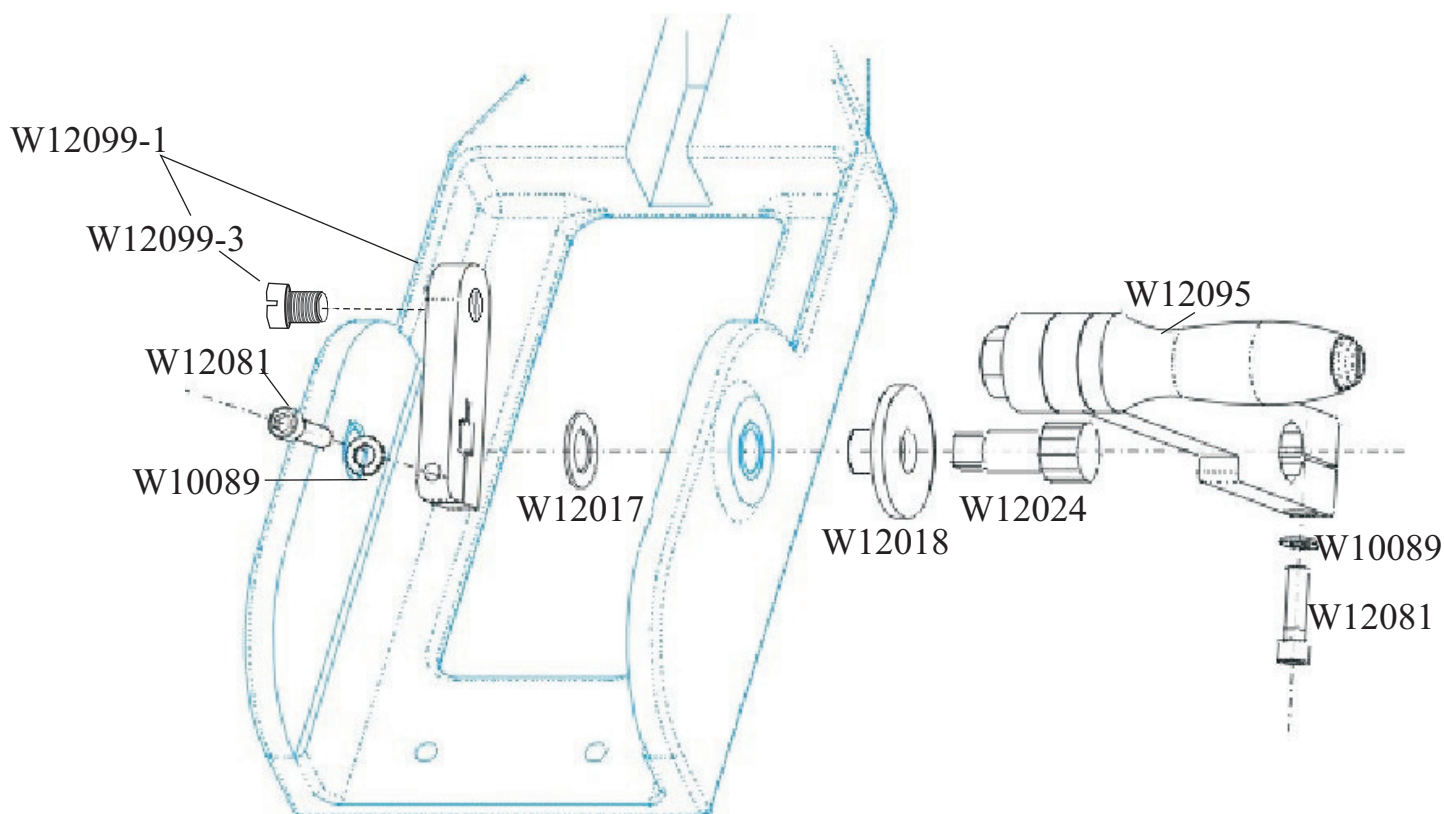
Fork Support



No.	Name of Part	Required
W11024	Hex Nut	2
W11025	Lock Washer	2
W12001	Hand Wheel	1
W12002	Fork Support Assembly	1
W12004	Eye Bolt (Short)	1
W12005	Eye Bolt (Long)	1
W12010	Trunnion Shaft	1
W12019	Guide Rod	1
W12029	Elevating Nut	1
W12047	Spring Pin	1
W12048	Hex Head Cap Screw	1
W12060	Cotter Pin	2
W12061	Hex Head Cap Screw	1
W12064	Socket Head Set Screw	1

To disassemble Handle Assembly:

Drive W12095 Handle Assembly away from the Mount after having unscrewed its W12081 Socket Head Cap Screw halfway. Drive W12099-1 Cocking Link Assembly away from the Mount after having unscrewed its W12081 Socket Head Cap Screw halfway. Drive out W12024 Handle Stud.

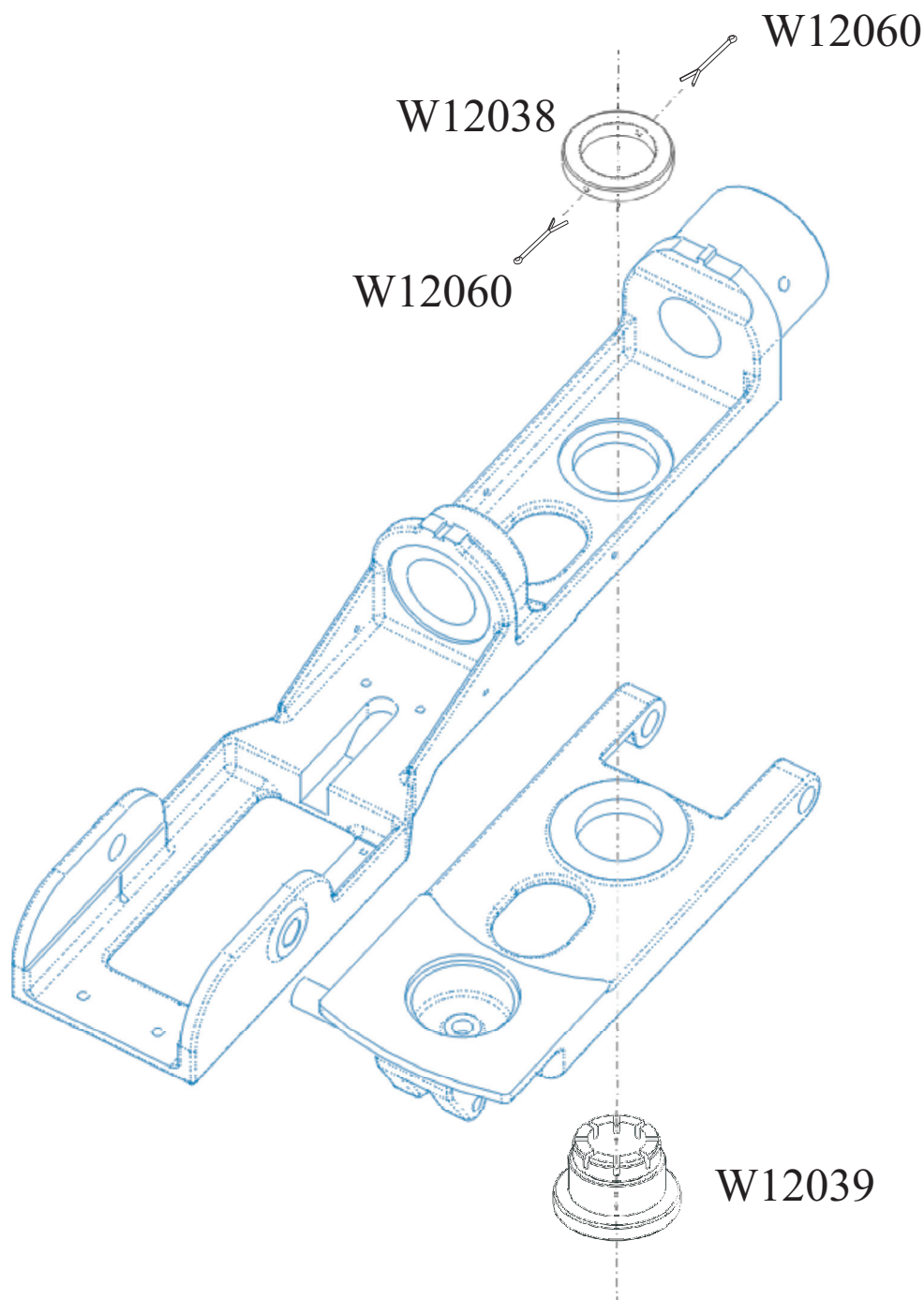

To assemble Handle Assembly:

During assembly make sure that W12099-1 Cocking Link Assembly and W12095 Handle Assembly is pushed tight towards W12024 Handle Stud before the 2 W12081 Socket Head Cap Screws are tightened.

No.	Name of Part	Required
W10089	Lock Washer	2
W12017	Washer	1
W12018	Barrel Guide Handle Bushing	1
W12024	Handle Stud	1
W12081	Socket Head Cap Screw	2
W12095	Handle Assembly	1
W12099-1	Cocking Link Assembly:	1
W12099-3	Cocking Link Guide Pin	1

To disassemble Swivel Stud:

Remove the 2 W12060 Cotter Pins and unscrew W12038 Swivel Stud Nut. W12039 Swivel Stud can now be lifted out of the mount.

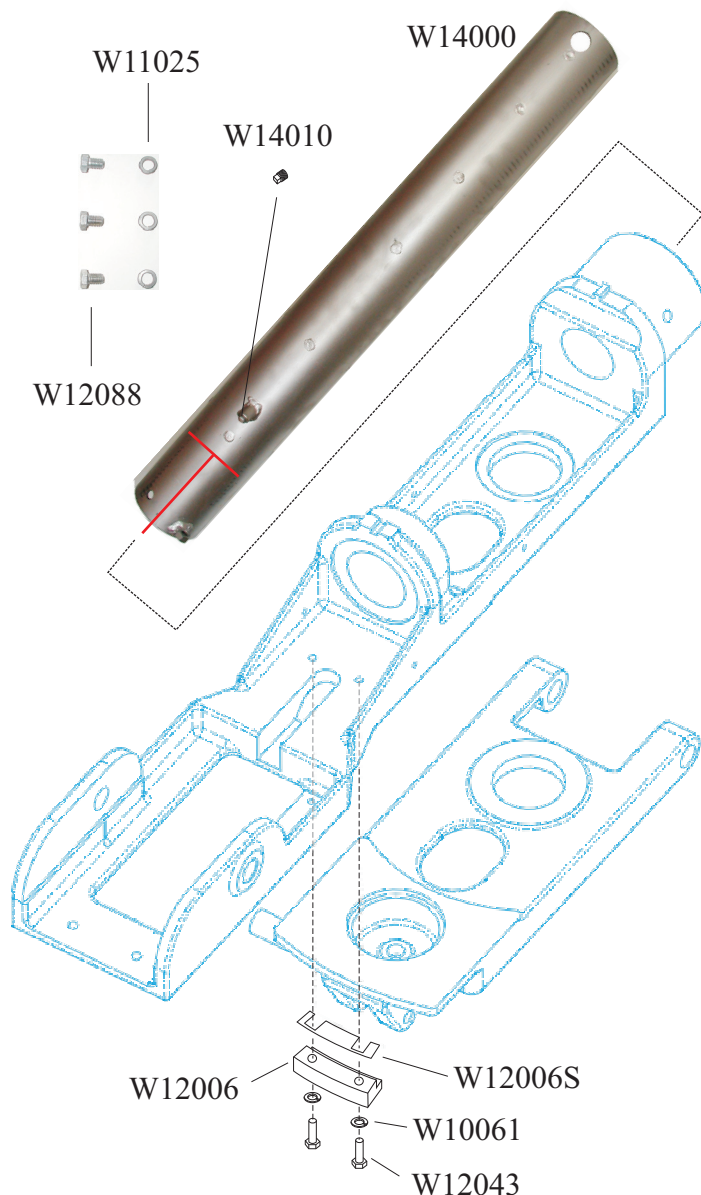

To assemble Swivel Stud:

W12039 Swivel Stud and W12038 Swivel Stud Nut may be assembled upside down. After assembly it is important to remember to install the 2 W12060 Cotter Pins.

No.	Name of Part	Required
W12038	Swivel Stud Nut	1
W12039	Swivel Stud	1
W12060	Cotter Pin	2

To disassemble Sound Reducer:

Unscrew the 3 W12088 Hex Head Cap Screw and pull W14000 Sound Reducer off the Mount. An old Sound Reducer may be extremely difficult to remove. First try with an



iron bar through the front holes in the Sound Reducer to turn left and right while pulling. If Sound Reducer still refuses to come off, cut it open as indicated with 2 red lines on the drawing. Begin with the one across the Sound Reducer 100 mm from the Mount, then cut from the Mount out to the first cut. **WARNING ! Sound Reducer is only 3,5 mm thick. If you cut any deeper you will damage the mount. Never start to cut the Sound Reducer off while the Gun is in the Mount.**

To assemble Sound Reducer:

Clean front end of Mount thoroughly. Apply heat resistant grease (800 degree Celsius) and slide Sound Reducer on to Mount. Before screwing on the 3 W12088 Hex Head Cap Screw align holes in Sound Reducer with holes in the Mount. Use iron bar through front holes in Sound Reducer to align holes.

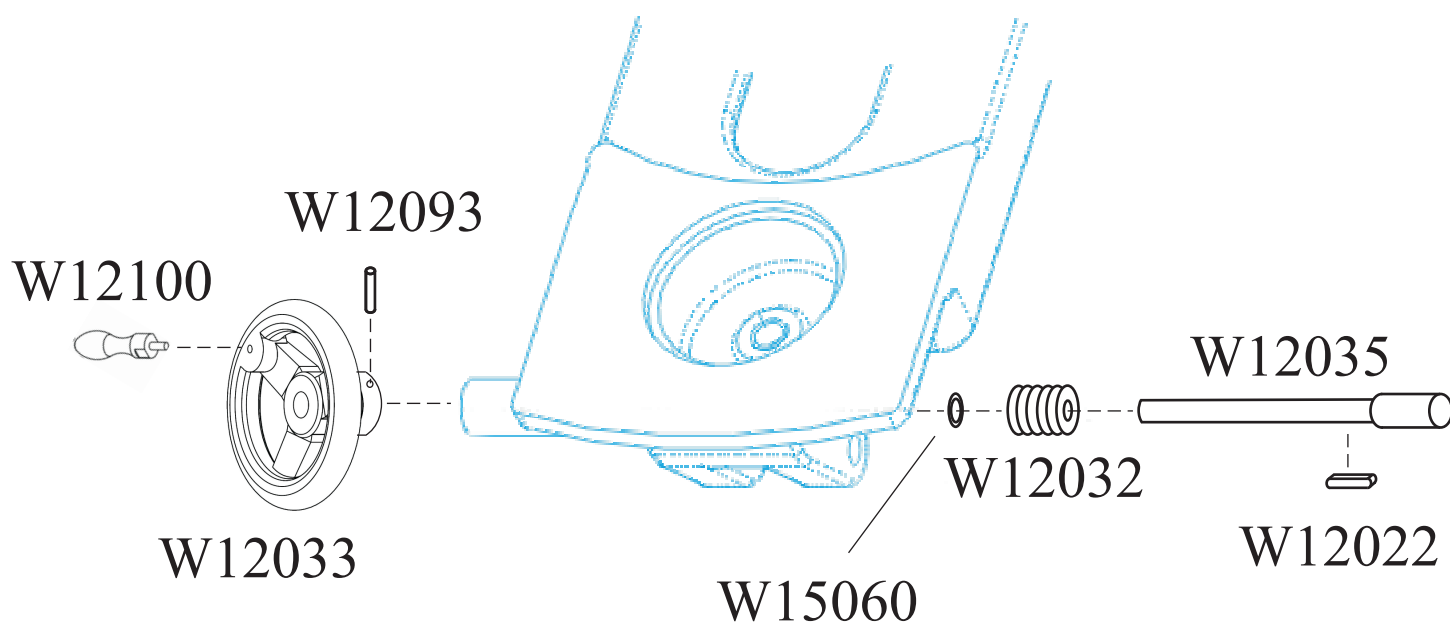
To disassemble Barrel Guide Clam:

Unscrew W12043 Hex Head Cap Screw and W12006 Barrel Guide Clamp can be removed.

No.	Name of Part	Required
W10061	Lock Washer	2
W11025	Lock Washer	3
W12006	Barrel Guide Clamp	1
W12006S	Barrel Guide Clamp Shim	3-5
W12043	Hex Head Cap Screw	2
W12088	Hex Head Cap Screw	3
W14000	Sound Reducer	1
W14010	Pipe Plug	1

To disassemble Handweel Traverse Adjustment:

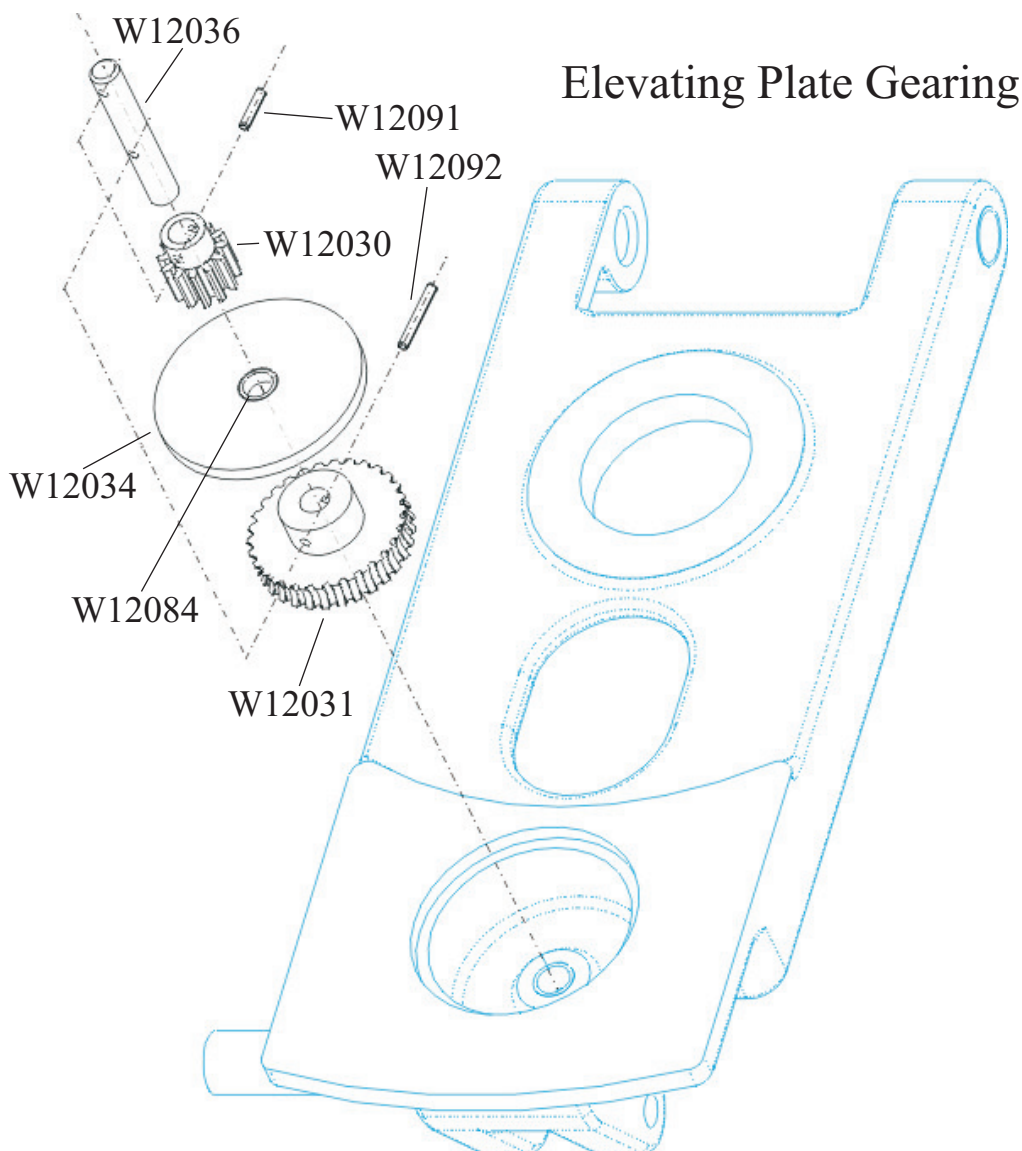
Drive W12093 Pin Assembly out with a pin punch, and pull off W12033 Handweel Traverse Adjustment, now pull W12035 Worm Shaft towards the right with one hand underneath in case W12022 Worm Shaft Key falls off. W12032 Worm Gear can not be taken out before Elevating Plate Gearing has been removed (See next page).



To assemble Handweel Traverse Adjustment:

Make sure to align the slot in W12032 Worm Gear and W12022 Worm Shaft Key. Align hole in W12033 Handweel Traverse Adjustment and W12035 Worm Shaft before driving in W12093 Pin Assembly.

No.	Name of Part	Required
W12022	Worm Shaft Key	1
W12032	Worm Gear	1
W12033	Handweel Traverse Adjustment Assy.	1
W12100	Handle Traverse Adjustment	1
W12035	Worm Shaft	1
W12093	Pin Assembly	1
W15060	Worm Shaft Space Washer	0-5



To disassemble Elevating Plate Gear:

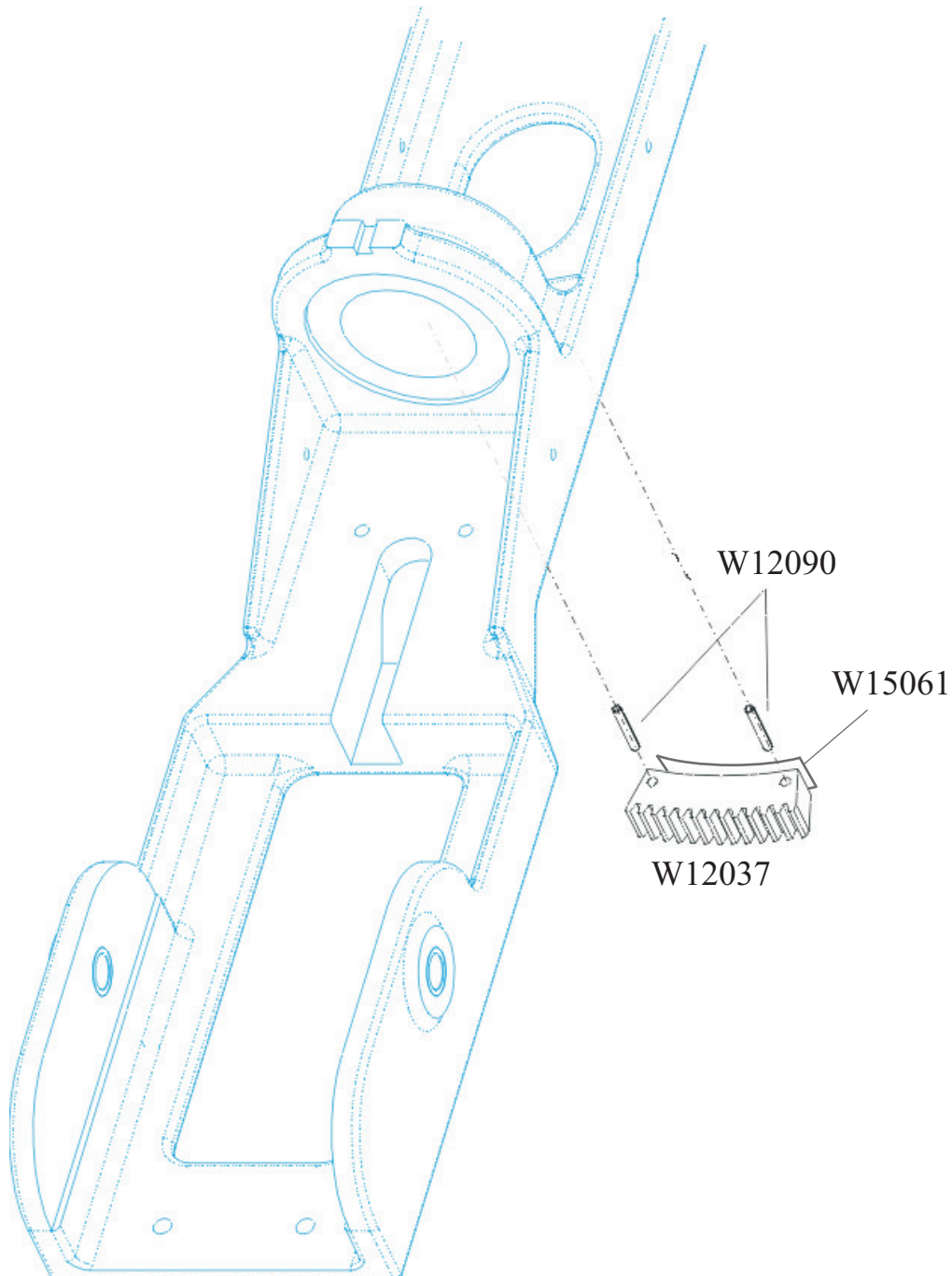
First remove Traverse Adjustment Handle (see previous page) then drive out the Elevating Plate Gear Assembly by hitting the W12036 Worm Gear Shaft from beneath with a pin punch. The Elevating Plate Gear can now be taken apart by driving out the 2 Pin Assembly's W12091 and W12092.

Elevating Plate Gear should be assembled before it is re-installed in the mount.

No.	Name of Part	Required
W12030	Traverse Pinion	1
W12031	Traverse Worm Gear	1
W12034	Cover Plate Assembly	1
W12036	Worm Gear Shaft	1
W12084	Upper Gear Shaft Bearing	1
W12091	Pin Assembly	1
W12092	Pin Assembly	1

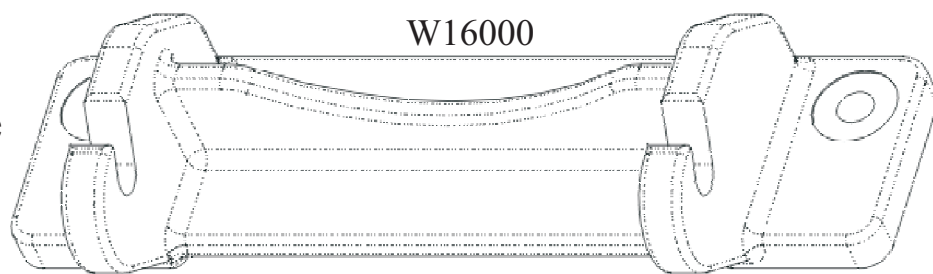
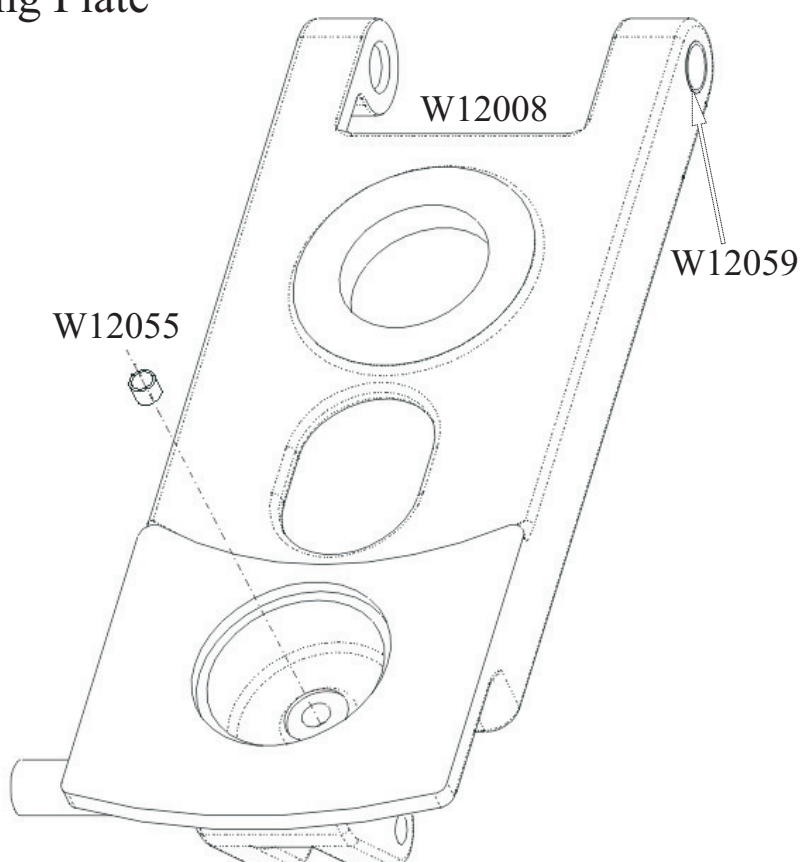
To disassemble Traverse Gear Section:

Drive out the 2 W12090 Pin Assemblies with a pin punch and remove W12037 Traverse Gear Section.


To assemble Traverse Gear Section:

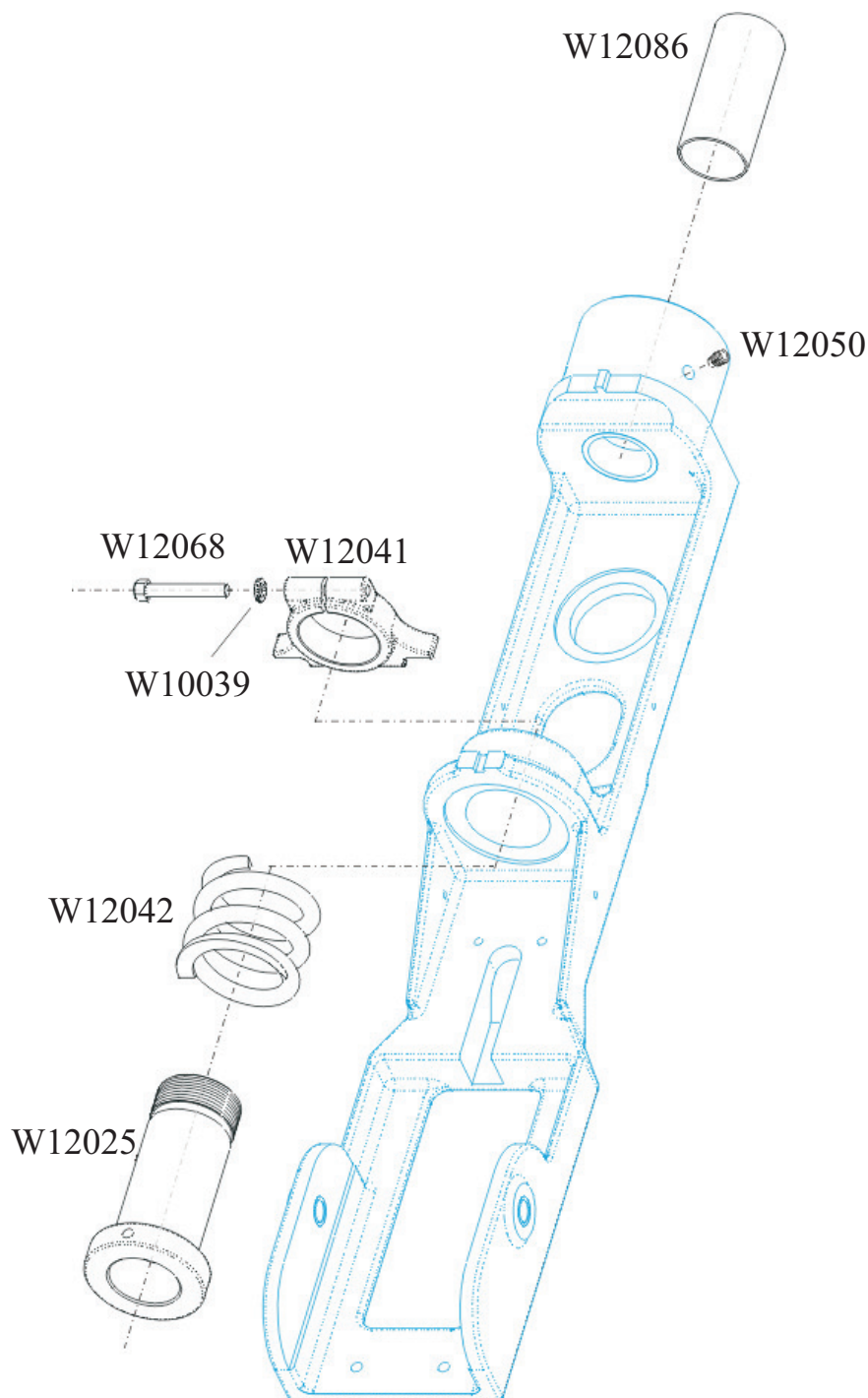
Remember to align holes in the Mount and the W12037 Traverse Gear Section before the 2 W12090 Pin Assemblies are driven back in place.

No.	Name of Part	Required
W12037	Traverse Gear Section	1
W12090	Pin Assembly	2
W15061	Traverse Gear Section Shim	0-5

Trunnion Plate

Elevating Plate

To disassemble Bearing Lower Gear Shaft:

W12055 Bearing Lower Gear Shaft can be driven out with a pin punch prior to installment of a new W12055 Bearing Lower Gear Shaft.

No.	Name of Part	Required
W12008	Elevating Plate Assembly	1
W12055	Lower Gear Shaft Bearing	1
W12059	Bushing	2
W16000	Trunnion Plate	1



To replace Front Barrel Support Bushing:

Remember to unscrew W12050 Socket Head Set Screw before trying to drive out W12086 Front Barrel Support Bushing. When the new Front Barrel Support Bushing has been pushed in, a hole should be drilled in it to make room for the W12050 Socket Head Set Screw.

To replace Rear Barrel Nut Assembly:

Unscrew W12068 Hex Head Cap Screw hereafter unscrew W12025 Rear Barrel Nut Assembly. After re-assembly remember to tighten W12068 Hex Head Cap Screw.

No.	Name of Part	Required
W10039	Lock Washer	1
W12025	Rear Barrel Support Bushing	1
W12041	Rear Barrel Support Bushing Nut	1
W12042	Recoil Spring	1
W12050	Socket Head Set Screw	1
W12068	Hex Head Cap Screw	1
W12086	Front Barrel Support Bushing	1



WINCHESTER INDUSTRIAL SERVICE

V. Parbst & Søn
41 Borsholmvej, 3000 Helsingør
Denmark

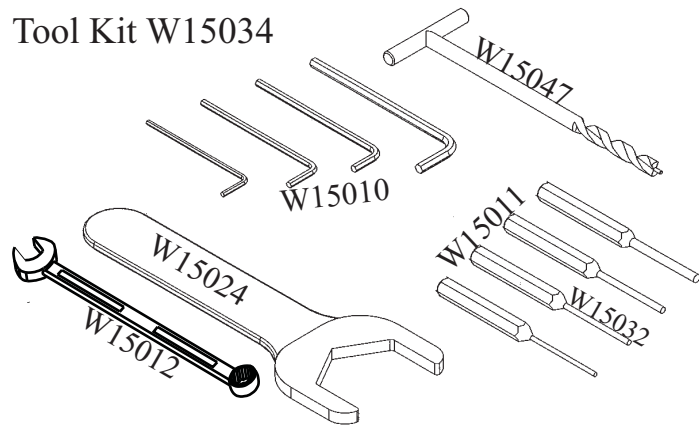
Phone no.: (45) 49 76 54 00
Fax no.: (45) 49 76 54 20
E-mail: winchester@parbst.dk

Tapping Kit W15051

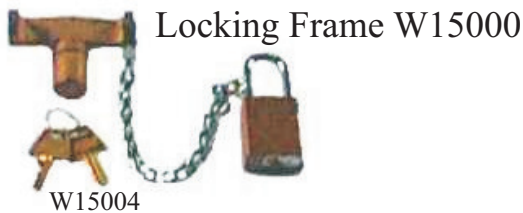


Tapping Application Accessory Kit is available to all users requiring positive elevation and traversing locking while firing the Winchester Industrial Gun.

Tool Kit W15034

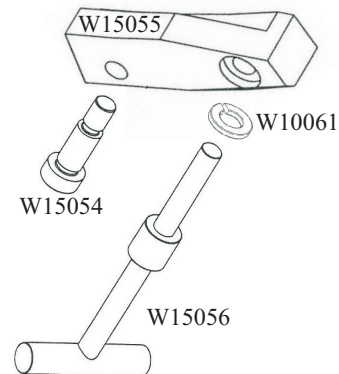


The Tool Kit is designed specifically for the Winchester Industrial Guns. Available at additional charge. The Tool Kit includes all the special tools that you need to disassemble your Winchester Industrial Gun.



Winchester has developed a security device for the 8 Ga. Industrial Gun. When the W15000 Locking frame assembly is installed, it ensures both that the chamber is kept free of foreign dust and dirt, and prevents anyone from chambering a live round of ammunition. This safety device should only be removed from the gun, when the gun is operated from the firing site.

Kiln Gun Position Lock W15051K



Kiln Application Accessory Kit is available to all accounts requiring positive traversing locking while firing Ringblaster Industrial Gun.

Cleaning Kit W15035



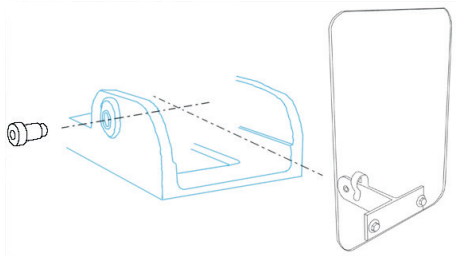
The W15035 Cleaning Kit contains everything you need to maintain the Winchester Industrial Gun in top working order. The Cleaning Kit includes following items:

- 1 Can (16 oz.) CRC 3-36 Aerosol lubricant and solvent
- 3 W15038 Barrel Brush
- 1 W15040 Bag of Cleaning Patches
- 1 W15041 Chamber Brush
- 1 W15042 Extractor Spring Hole Brush

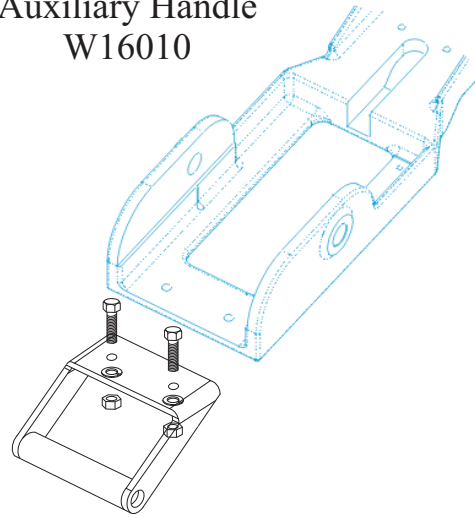
Viewing Plate Assembly W16009



The W16009 Viewing Plate Assembly protects the shooter's face against sparks and hot flying particles.



Auxiliary Handle W16010



The W16010 Auxiliary Handle provides a firm grip on the gun during transport. To avoid hand injury during the shooting process the handle should be installed beneath the mount.

Kiln Gun Cover W15062

Keep your gun clean with W15062 Kiln Gun Cover. The Cover protects the gun from dust and particles while the gun is not in use.



CE8T

Test cartridges

To be used before and after maintenance to verify function of firing and extraction mechanism



**WINCHESTER INDUSTRIAL SERVICE**

V. Parbst & Søn
41 Borsholmvej, 3000 Helsingør
Denmark

Phone no.: (45) 49 76 54 00
Fax no.: (45) 49 76 54 20
E-mail: winchester@parbst.dk

Correcting Difficulties

Problem	Fault	Remedy	Page
Gun Will Not Traverse, Floats Freely	1. Sheared Pin in Traverse Pinion W12030.	1. Replace Pin W12091.	9
	2. Sheared Pin in Traverse Worm Gear W12031.	2. Replace Pin W12092.	9
Gun Hard to Traverse	1. Dirt corrosion between Elevating Plate, Barrel Guide and Swivel Stud.	1. Remove, clean and grease lightly and re-assemble.	6/7